



Mixer Tap Margot Copper

Mixer Taps

Code: 8524 008



DETAILS

Mixer type	Single-lever mixer tap with rotating, collapsible barrel (Up&Down)
Material	Brass
Texture	Chromed
Finish	PVD
Coloring	Copper
Cartridge	With ceramic discs
Mixer hole	ø35mm
Strengthening plate	ø55mm
Max worktop thickness	70 mm

Rotating angle 360°

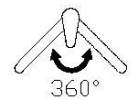
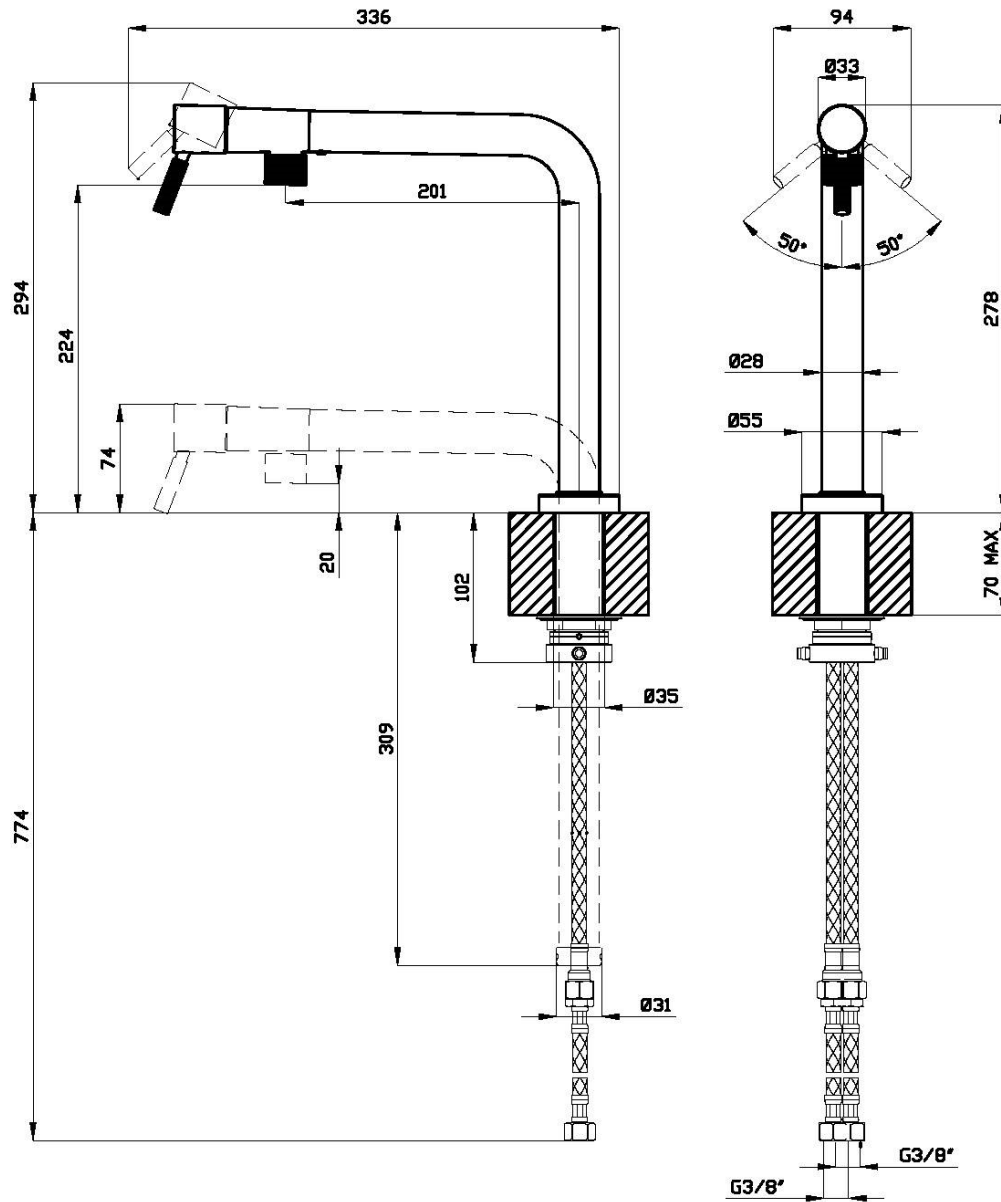
FEATURES

COLLAPSIBLE BARREL Feature that makes it possible to foresee the sink in front of a window, so as to enjoy the natural light.

Rotating angle All the taps have a wide angle of rotation. Some models even permit a full 360° rotation.

Strengthening plate Foster's mixer taps are equipped with the strengthening plate that offers perfect stability on any sink.

TECHNICAL DATA



GALLERY

